



PARALLAXE

WWW.WASHBURN.COM/PARALLAXE

Washburn

THE HISTORY OF WASHBURN GUITARS

Some stories demand to be told. Told through music, through lyrics, through a cultural revolution. This is the story of Washburn Guitars.

Steeped in the tradition of fine instrument making, Washburn Guitars' dynamic 130 year history began in Chicago in 1883.

Throughout its 130 years, Washburn saw the rise of acoustic guitar driven folk music through today's electric guitar dominated styles.

As rock music has progressed, a new, harder form of rock has evolved. Born in the '60s and increasing in popularity through the '70s and '80s, Metal has become the most aggressive style of music in the world. Washburn has been a dominant force in the creation of some of the most brutal Metal ever produced. From Nazareth, UFO and Quiet Riot through Ozzy, Disturbed to Decapitated, Extreme and Pantera, Washburn has been a part of the very fabric of Metal for decades.

Artists that have played Washburn guitars throughout the years include Nuno Bettencourt (Extreme), Paul Stanley and Ace Frehley (Kiss), Dan Donegan (Disturbed), Dimebag Darrell (Pantera), Rudy Sarzo (Quiet Riot, Ozzy, Whitesnake), Jennifer Batten (Michael Jackson and Jeff Beck), Sammy Hagar, Trevor Rabin (Yes), JF (Kataklysm), Vogg (Decapitated), Greg Tribbett (Mudvayne and Hellyeah), just to name a few...

In 2014 the Parallaxe Series was introduced. A series created specifically for rock, metal and shred guitarists with unique features and technology. The Solar Series came from widely known artist, Ola Englund, noted guitarist for The Haunted, Feared and former Six Feet Under. Together with legendary guitarist / producer Trevor Rabin, Ola is the first Washburn artist to have his own Signature Series of Parallaxe guitars, The Solar Series. After that launch, Washburn Parallaxe teamed up with Marzi Montazeri, guitarist for Phil Anselmo and the Illegals, to have his own series - The Priestess.

Washburn continues to be a consistent leader in combining design, innovation, and technology to deliver rich, bold sounds for a vast musical landscape. Whether you chug or shred, there is a Washburn that has chosen you to be its master.



Floyd Rose®



D'Addario



PARALLAXE THE WAY A SHRED GUITAR SHOULD BE

Utilizing our 130 years of guitar crafting knowledge and experience and combined with a love and passion for guitars, we have created our most advanced rock/metal guitar. The line includes features that most demanding rock/metal players have requested for years in their guitars.

Parallaxe guitars are designed specifically for modern chops intensive shredders. No corners have been cut, no compromises have been made in design or features; it is the perfect shred machine.



STEPHEN'S CUTAWAY / FULL ACCESS SET NECK JOINT

All Parallaxe guitars feature either the highly respected Stephen's extended cutaway (bolt on), or a full access neck joint (set neck), which allows for completely unrestricted access up to the last fret. These guitars will allow your left hand to play all over the neck without having to change the hand position.



FLOYD ROSE 1000

All Parallaxe tremolo equipped guitars feature an Original Floyd Rose. It's made of hardened steel, which allows both better sustain and resonance.



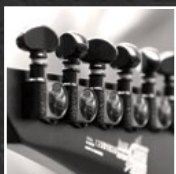
SPRING SILENCERS

All tremolo springs are mechanically muted in order to avoid unwanted spring resonance.



OVERSIZED BRASS BLOCK

All Floyd Rose equipped guitars feature an oversized brass-block bridge. The block is a critical part that affects the overall tone more than any other component in the guitar. It will increase sustain and resonance, making the guitar sound fuller and more alive even when unplugged.



GROVER 18:1/ LOCKING TUNERS

All tremolo equipped guitars feature Grover 18:1 tuners, allowing for a more precise and stable tuning. All non tremolo equipped guitars feature Grover 18:1 locking tuners.



EVERTUNE BRIDGE

EverTune equipped guitars benefit from having a mechanical bridge that uses a spring and a lever on each string to keep each string in tune once tuned. Each saddle pulls on each string with constant tension, naturally maintaining tune through all conditions.



USA PICKUPS

Most Parallaxe guitars are loaded with either Seymour Duncan passive or EMG active pickups. These guitars are designed for rock & metal, therefore we optimized the pickup selection to achieve a perfect metal tone right out of the box.



BUZZ FEITEN TUNING SYSTEM

The Buzz Feiten Tuning System solves tuning and intonation problems that regular guitars have, and it allows for perfect chords and intervals throughout the neck.



SUPER JUMBO FRETS

Most Parallaxe guitars are fitted with Super Jumbo Frets, for more precise and faster playing.



SERIES/PARALLEL PUSH/PULL SWITCHES

Series / parallel switch for each pickup gives maximum tonal versatility, still without the hum.



29 FRET NECK

The PXS 29 Series models feature 29 frets for advanced shredding. The extended fingerboard gives you access up to 5 half steps above 2 octaves on the G, B & E strings.



PXM SERIES

THE PXM SERIES HAS BEEN DESIGNED WITH THE MODERN METAL GUITARIST IN MIND. NO CORNERS CUT, NO COMPROMISES HAVE BEEN MADE IN THE DESIGN OF THE PARALLAXE PXM SERIES. THESE GUITARS ARE PACKED WITH A TON OF FEATURES YET UNSEEN IN "PRODUCTION" GUITARS, ALL TAILORED WITH THE SHREDDER GUITARIST IN MIND.



"I am working with WASHBURN since we've started with THE NEW BLACK back in 2009. I always loved their guitars and playing them were very inspiring. A lot of massive riffs are just there because of my Washburn Vs! But then they made the PARALLAXE. I was literally blown away as I had them in my hands for the first time. Very awesome designs, killer tone and the best handling of a guitar I've ever experienced...and I had a lot of good guitars before. Thanx WASHBURN for making the perfect Rock Guitar and having me in your team!"

- Fabian Schwarz, The New Black

PXM-20 & 10 SERIES



PXM27EC



PXM20EFTBM



PXM20FRFBCBM



PXM18EB

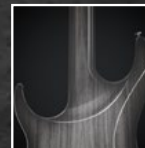


PXM10FRQTBLM

ALSO AVAILABLE AS LEFT HANDED VERSION



STEPHEN'S
CUTAWAY / FULL
ACCESS SET
NECK JOINT



FLOYD ROSE 1000



SPRING
SILENCERS



OVERSIZED
BRASS BLOCK



GROVER 18:1/
LOCKING TUNERS



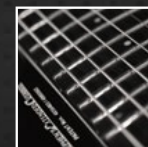
USA PICKUPS



BUZZ FEITEN
TUNING SYSTEM



SUPER JUMBO
FRETS



PXM-200 & 100 SERIES



PXM100C

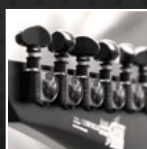


PXM200AFTBLM

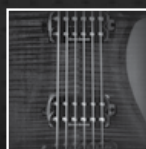
STEPHEN'S
CUTAWAY / FULL
ACCESS SET
NECK JOINT



GROVER
18:1/ LOCKING
TUNERS



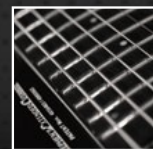
DUNCAN
DESIGNED
PICKUPS



BUZZ FEITEN
TUNING SYSTEM



SUPER JUMBO
FRETS



PXM-TR SERIES

TREVOR RABIN SIGNATURE



Playing this guitar is like getting into an old saddle of mine. Perfect fit, perfect sound. Phenomenal.

-Trevor Rabin

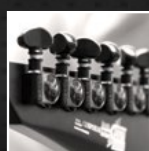


PXM-TR20

**STEPHEN'S
CUTAWAY / FULL
ACCESS SET
NECK JOINT**



**GROVER
18:1/ LOCKING
TUNERS**



USA PICKUPS



**BUZZ FEITEN
TUNING SYSTEM**



**SERIES/PARALLEL
PUSH/PULL
SWITCHES**



**HIPSHOT STYLE
BRIDGE**



PXM-SERIES

		PXM20	PXM27E	PXM10
HEADSTOCK	HARDWARE	Black nickel	Black nickel	Black nickel
	HEADSTOCK	Washburn 3+3 headstock / angled neck	Washburn 4+3 headstock / angled neck	Washburn 3+3 headstock / angled neck
	BINDING	None	None	None
	MACHINE HEAD	PXM20FRFBCBM: Grover 18:1 PXM20EFTBM: Grover 18:1 Locking	Grover 18:1 Locking	Grover 18:1
NECK	STRINGS	XL-120 D'Addario	XL-120 D'Addario	XL-120 D'Addario
	SCALE/FRET	Standard thin 25.5" / 24F, with Buzz Feiten Tuning System	Standard thin 25.5" / 24F, with Buzz Feiten Tuning System	Standard thin 25.5" / 24F, with Buzz Feiten Tuning System
	NECK MATERIAL	1 piece quartersawn Maple	5 ply quartersawn Maple x 3 / Mahogany x 2	1 piece quartersawn Maple
	NUT	PXM20FRFBCBM: Locking PXM20EFTBM: Graphite	Graphite	Locking
	F/B MATERIAL	Ebony	Ebony	Ebony
	BINDING	None	None	None
	FRET WIRE	Super Jumbo Frets	Super Jumbo Frets	Super Jumbo Frets
BODY	BODY SHAPE	Parallaxe Body Shape (Carved top)	Parallaxe Body Shape (Carved top)	Parallaxe Body Shape (Flat top)
	BODY MATERIAL	PXM20FRFBCBM: Mahogany with Flame Maple veneer PXM20EFTBM: Alder	Alder	Mahogany with Quilted Maple veneer
	BINDING	None	None	None
	JOINT PLATE	Full Access Set Neck	Full Access Set Neck	Stephen's Extended Cutaway Bolt On
	TAIL & TAIL PIECE	PXM20FRFBCBM: Floyd Rose 1000 with 34mm brass tremolo block PXM20EFTBM: Tune-O-Matic / String Thru	Tune-O-Matic / String Thru	Floyd Rose 1000 with brass tremolo block - 34mm
	PICKUPS	PXM20FRFBCBM: SD Jazz / SD Distortion PXM20EFTBM: EMG 85N / 81B	EMG707 EMG707	SD Jazz SD Distortion
	CONTROLS	PXM20FRFBCBM: 1V, T with series / parallel switching PXM20EFTBM: 1V, 1T	1V, 1T	1V, 1T with series / parallel switching
	SWITCH	3-way Toggle switch with Black nickel knobs	3-way Toggle switch with Black nickel knobs	3-way Toggle switch with Black nickel knobs
	FINISH	PXM20FRFBCBM: Flame Black Cherry Burst Matte PXM20EFTBM: Trans Black Matte	Black Matte	Trans Blue Matte Also available as a left handed version

All specifications subject to change without notice



PXM18E	PXM100	PXM200A	PXM-TR20
Black nickel	Black	Black	Black nickel
Washburn 4+4 headstock / angled neck	Washburn 3+3 headstock / angled neck	Washburn 3+3 headstock / angled neck	Washburn 3+3 headstock / angled neck
None	None	None	None
Grover 18:1 Locking	Grover 18:1	Grover 18:1	Grover 18:1 Locking
XL-120 D'Addario	XL-120 D'Addario	XL-120 D'Addario	XL-120 D'Addario
Standard thin 27"/ 24F, with Buzz Feiten Tuning System	Standard thin 25.5"/ 24F, with Buzz Feiten Tuning System	Standard thin 25.5"/ 24F, with Buzz Feiten Tuning System	Standard thin 25.5"/ 24F, with Buzz Feiten Tuning System
5 piece Maple / Mahogany	1 piece quartersawn Maple	1 piece quartersawn Maple	1 piece quartersawn Maple
Graphite	Graphite	Graphite	Graphite
Ebony	Ebony	Ebony	Ebony
None	None	None	None
Super Jumbo Frets	Super Jumbo Frets	Super Jumbo Frets	Medium Jumbo Frets
Parallaxe Body Shape (Flat top)	Parallaxe Body Shape (Flat top)	Parallaxe Body Shape (Carved top)	Parallaxe Body Shape (Carved top - Trevor Rabin Signature)
Alder	Basswood	Basswood with Flame Maple veneer	PXM-TR20: Mahogany with Flame Maple veneer
None	None	None	None
Stephen's Extended Cutaway Bolt On	Stephen's Extended Cutaway Bolt On	Full Access Set Neck	Full Access Set Neck
Fixed bridge	Fixed bridge	Fixed bridge	PXM-TR20: Fixed bridge
EMG808 EMG808	SD HB101 SD HB103 Reversed Polarity	SD Active HB105N SD Active HB105B	SD TB4 with black plates
1V, 1T	1V, 1T with push / pull for coil cut on both pickups	Active, 1V, 1T	1V, 1T with series / parallel switching on both pickups
3-way Toggle switch with Black nickel knobs	5-way blade super switch with Black nickel knobs	3-way Toggle switch with Black nickel knobs	3-way Toggle switch with Black nickel knobs
Black Gloss	Carbon Black Matte	Flame Trans Blue Matte	Flame Trans Blue Burst



PXS-SERIES

THE PXS SERIES REPRESENTS OUR DETERMINATION TO BUILD THE PERFECT ROCK AND METAL GUITAR FOR TODAY'S MOST DEMANDING PROFESSIONAL PLAYERS. THESE GUITARS ARE LOADED WITH FEATURES ELIMINATING THE NEED FOR AFTERMARKET MODIFICATION. WITH COMFORTABLE ACCESS TO THE HIGHEST FRETS, BIG TONE AND FAST NECKS YOU WON'T FIND A BETTER CHOICE FOR YOUR RECORDING AND LIVE PERFORMANCES.



"The PXS20FRTBB is the best guitar I have ever played! It's a solid axe in every way which suits my playing style perfect. For metal this is a choice you can't go wrong with. There is so much quality in the PXS20FRTBB and it sounds amazing. The Parallaxe series is the future for metal guitarists!"

- Jimmy Hiltula, Sister Sin

PXS-10 SERIES



PXS10EC



PXS10FRDLXWB



PXS10EDLXTBM

ALSO AVAILABLE AS LEFT HANDED VERSION

STEPHEN'S
CUTAWAY/FULL
ACCESS SET
NECK JOINT

FLOYD
ROSE
1000

SPRING
SILENCERS

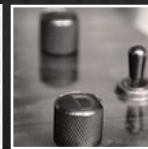
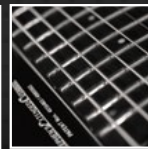
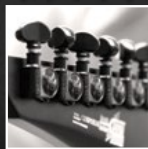
OVERSIZED GROVER 18:1/
BRASS BLOCK LOCKING
TUNERS

USA
PICKUPS

BUZZ FEITEN
TUNING
SYSTEM

SUPER
JUMBO
FRETS

SERIES/
PARALLEL
PUSH/PULL
SWITCHES



PXS-20 & 29 SERIES



PXS20FRTBB



PXS29FRTBBM



PXS29-7FRDSAM

29 FRET NECK VERSION

STEPHEN'S
CUTAWAY/FULL
ACCESS SET
NECK JOINT



FLOYD
ROSE 1000



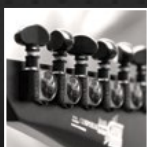
SPRING
SILENCERS



OVERSIZED
BRASS
BLOCK



GROVER
18:1/
LOCKING
TUNERS



USA
PICKUPS



BUZZ FEITEN
TUNING
SYSTEM



SUPER
JUMBO
FRETS



SERIES/
PARALLEL
PUSH/PULL
SWITCHES



PXS-100 SERIES



PXS100B



PXS100ARFRWHM

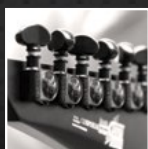
**FLOYD
ROSE SPECIAL**
(ONLY FOR FR SERIES)



**SPRING
SILENCERS**



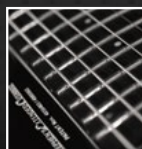
**GROVER 18:1
LOCKING
TUNERS**



**BUZZ FEITEN
TUNING
SYSTEM**



**SUPER
JUMBO
FRETS**



**DUNCAN
DESIGNED
PICKUPS**



PXS-SERIES

	PXS20	PXS10DLX
HEADSTOCK	HARDWARE	Black nickel
	HEADSTOCK	Washburn 6 in line headstock / angled neck
	BINDING	Single white
	MACHINE HEAD	Grover 18:1
NECK	STRINGS	XL-120 D'Addario
	SCALE/FRET	Standard thin 25.5"/ 24F, with Buzz Feiten Tuning System
	NECK MATERIAL	1 piece quartersawn Maple
	NUT	Locking
	F/B MATERIAL	Ebony
	BINDING	Single white
	FRET WIRE	Super Jumbo Frets
BODY	BODY SHAPE	Parallaxe Body Shape (Carved top)
	BODY MATERIAL	Mahogany with Flame Maple veneer
	BINDING	Single white
	JOINT PLATE	Full Access Set Neck
	TAIL & TAIL PIECE	Floyd Rose 1000 with 34mm brass tremolo block
	PICKUPS	SD Jazz / SD Distortion
	CONTROLS	1V, 1T with series / parallel switching
	SWITCH	3-way Toggle switch with Black nickel knobs
	FINISH	Trans Black Burst Gloss

All specifications subject to change without notice

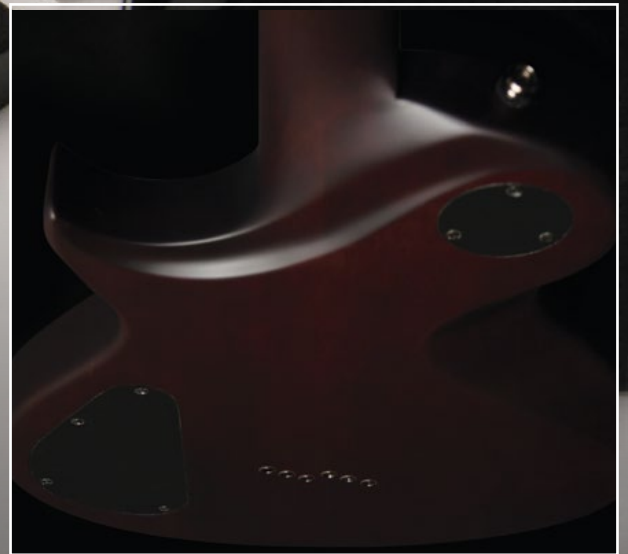


PXS10	PXS100	PXS29 / PXS29-7
Black nickel	Black	Black Nickel
Washburn 6 in line headstock / angled neck	Washburn Reversed 6 in line headstock / angled neck	PXS29FRTBBM: Washburn 6 in line headstock / angled neck PXS29-7FRDSA: Washburn 7 in line headstock / angled neck
None	None	None
Grover 18:1 Locking	Grover 18:1	Grover 18:1
XL-120 D'Addario	XL-120 D'Addario	XL-120 D'Addario
Standard thin 25.5"/ 24F, with Buzz Feiten Tuning System	Standard thin 25.5"/ 24F, with Buzz Feiten Tuning System	Standard thin 25.5"/ 29F, with Buzz Feiten Tuning System
1 piece quartersawn Maple	1 piece quartersawn Maple	1 piece quartersawn Maple
PXS10EC: Graphite	PXS100ARFRWHM: Floyd Rose black nut PXS100B: Graphite	Locking
Ebony	Ebony	Ebony
None	None	None
Super Jumbo Frets	Super Jumbo Frets	Super Jumbo Frets
Parallaxe Body Shape (Flat top)	Parallaxe Body Shape (Flat top)	Parallaxe Body Shape (Carved top)
Alder	Basswood	PXS29FRTBBM: Mahogany with Flame Maple veneer PXS29-7FRDSA: Swamp Ash
None	None	None
Stephen's Extended Cutaway Bolt On	Stephen's Extended Cutaway Bolt On	Stephen's Extended Cutaway Set Neck
Tune-O-Matic / String Thru	PXS100ARFRWHM: Floyd Rose Special with 34mm tremolo block PXS100B: Fixed Bridge	Floyd Rose 1000 with 34mm brass tremolo block
EMG 85N / 81B	PXS100ARFRWHM: SD HB105 / SD HB105 PXS100B: Duncan Designed HB101N / HB103B	PXS29FRTBBM: SD STK-S4 Classic Stack / SD TB6 with black plates PXS29-7FRDSA: SD SH6-7 / SD SSL5-7
1V, 1T	PXS100ARFRWHM: Active, 1V, 1T PXS100B: 1V, 1T with push / pull for coil splitting	1V, 1T with series / parallel push / pull pot for the bridge pickup
3-way Toggle switch with Black nickel knobs	3-way Toggle switch with Black knobs	3-way Toggle switch with Black nickel knobs
Carbon Black Matte	PXS100B: Black Gloss PXS100ARFRWHM: White Matte	PXS29FRTBBM: Trans Black Burst Matte PXS29-7FRDSA: Dark Swamp Ash Matte



PXL-SERIES

THE PXL SERIES ARE LOADED WITH UNIQUE FEATURES SUCH AS CUSTOM CARVED BACK AND BUZZ FEITEN TUNING SYSTEM OFFERING UNCOMPROMISING PERFORMANCE AND PLAYABILITY. THESE STYLISH GUITARS HAVE AN UNSURPASSED PLAYING COMFORT WITH TOTAL ACCESS NECK AND INCREASED TONE AND SUSTAIN. NO MATTER WHAT STYLE OF MUSIC YOU ARE PLAYING, THESE SINGLE CUT WORKING MACHINES WILL BRING YOUR STAGE AND STUDIO WORKS TO A WHOLE NEW LEVEL.



"I've always been looking for an axe that is light and easy to handle while still remaining a killer tone and crushing lows at the bottom end."

- OFFICER Z, Wild Zombie Blast Guide

PXL-20 SERIES



PXL20B



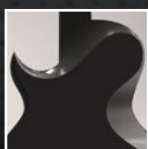
PXL20EWH



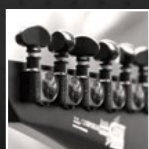
PXL27EC

ALSO AVAILABLE AS LEFT HANDED VERSION

**FULL ACCESS
SET NECK
JOINT**



**GROVER 18:1
LOCKING
TUNERS**



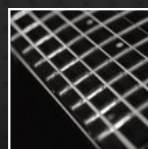
**USA
PICKUPS**



**BUZZ FEITEN
TUNING
SYSTEM**



**SUPER
JUMBO
FRETS**



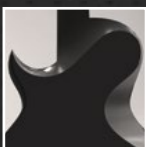
**SERIES/
PARALLEL
PUSH/PULL
SWITCHES**



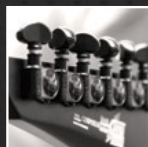
PXL-10 SERIES



**FULL ACCESS
SET NECK
JOINT**



**GROVER 18:1
LOCKING
TUNERS**



**BUZZ FEITEN
TUNING
SYSTEM**



**SUPER
JUMBO
FRETS**



**SERIES/
PARALLEL
PUSH/PULL
SWITCHES**



**USA
PICKUPS**



PXL-100 & 200 SERIES

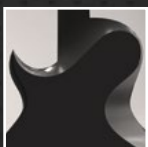


PXL200FHB

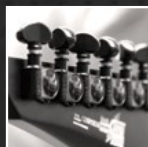


PXL100B

FULL ACCESS
SET NECK
JOINT



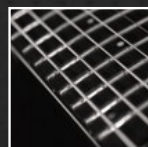
GROVER 18:1/
LOCKING
TUNERS



BUZZ FEITEN
TUNING
SYSTEM



SUPER
JUMBO
FRETS



DUNCAN
DESIGNED
PICKUPS



PXL-SERIES

PXL20 / 27

PXL10

HEADSTOCK	HARDWARE	Black	Black nickel
	HEADSTOCK	Washburn 3+3 headstock / angled neck Washburn 3+4 headstock / angled neck	Washburn 3 +3 headstock / angled neck
	BINDING	5 ply binding	None
	MACHINE HEAD	Grover 18:1 Locking	Grover 18:1 Locking
NECK	STRINGS	EXL110 D'Addario	EXL110 D'Addario
	SCALE/FRET	Standard 24 3/4" / 22F, with Buzz Feiten Tuning System PXL27EC: 25 1/2" 24F, with Buzz Feiten Tuning System	Standard 24 3/4" / 24F, with Buzz Feiten Tuning System
	NECK MATERIAL	1 piece Mahogany	1 piece Mahogany
	NUT	Graphite	Graphite
	F/B MATERIAL	Ebony	Ebony
	BINDING	1 ply binding	None
	FRET WIRE	Super Jumbo Frets	Super Jumbo Frets
BODY	BODY SHAPE	Parallaxe Idol Body Shape (Carved top)	Parallaxe Idol Body Shape (Carved top)
	BODY MATERIAL	Mahogany	Mahogany
	BINDING	5 ply binding	None
	JOINT PLATE	Full Access Set Neck	Full Access Set Neck
	TAIL & TAIL PIECE	Tune-O-Matic with tailpiece	Tune-O-Matic / String Thru
	PICKUPS	PXL20B: SD Jazz / JB PXL20EWH: EMG 85N / 81B PXL27EC: EMG707 / EMG707	PXL10WA: SD Jazz / JB PXL10EC: EMG 85N / 81B
	CONTROLS	PXL20B: 2V, 1T with series / parallel switching PXL20EWH / PXL27EC: 2V, 1T	PXL10WA: 2V, 1T with series / parallel switching PXL10EC: 2V, 1T
	SWITCH	3-way Toggle switch with Black knobs	3-way Toggle switch with Black nickel knobs
	FINISH	PXL20B: Black Gloss, also available as a left handed version PXL20EWH: White gloss PXL27EC: Carbon Black Matte	PXL10WA: Walnut Matte PXL10EC: Black Matte

All specifications subject to change without notice



PXL10F**PXL100****PXL200**

Black nickel	Black	PXL200FHB: Chrome
Washburn 3+3 headstock / angled neck	Washburn 3+3 headstock / angled neck	Washburn 3+3 headstock / angled neck
None	None	5 ply white binding
Grover 18:1 Locking	Grover 18:1	Grover 18:1
XL120 D'Addario	XL120 D'Addario	EXL110 D'Addario
Standard 24.75" / 24F, with Buzz Feiten Tuning System	Standard 24.75" / 24F, with Buzz Feiten Tuning System	Standard thin 24.75" / 22F, with Buzz Feiten Tuning System
1 piece Mahogany	1 piece Maple	1 piece quartersawn Mahogany
Graphite	Graphite	Graphite
Ebony	Ebony	Ebony
None	None	1 ply white binding
Super Jumbo Frets	Super Jumbo Frets	Super Jumbo Frets
Parallaxe Idol Body Shape (Carved top)	Parallaxe Body Shape (Carved top)	Parallaxe Idol Body Shape (Carved top)
Mahogany w/ flamed maple veneer	Basswood	Mahogany with Flame Maple veneer
None	None	3 ply white binding
Full Access Set Neck	Full Access Set Neck	Full Access Set Neck
Tune-O-Matic w/ String Thru	Tune-O-Matic w/ string thru	Tune-O-Matic with tailpiece
SD Jazz / JB	Duncan Designed HB101N / HB103B	PXL200FHB: SD HB101N Zebra / SD HB103B Zebra
2V, 1T with series / parallel switching	2V, 1T	2V, 1T with coil cut
3-way Toggle switch with black knobs	3-way Toggle switch with Black knobs	3-way Toggle switch with Chrome knobs
Flame Trans Black Matte	Black Gloss	Flame Honey Burst



PX-SOLAR ET & FR SERIES

OLA ENGLUND SIGNATURE



PX-SOLAR6ETC



PX-SOLAR6ETPWM

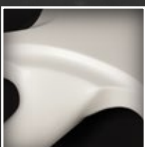


PX-SOLAR17ETC



PX-SOLAR16ETC

**FULL ACCESS
SET NECK
JOINT**



**SPRING
SILENCERS
(ONLY FOR FR SERIES)**



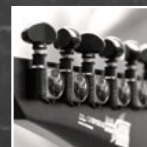
**FLOYD ROSE
1000 (ONLY FOR
FR SERIES)**



**OVERSIZED
BRASS BLOCK
(ONLY FOR FR SERIES)**



**GROVER 18:1/
LOCKING
TUNERS**



**EVERTUNE
BRIDGE**



THE PX-SOLAR ET & FR SERIES IS THE SIGNATURE LINE OF SWEDISH GUITARIST AND PRODUCER OLA ENGLUND (THE HAUNTED, FEARED, FORMER SIX FEET UNDER...). PX-SOLAR ET SERIES GUITARS FEATURE AN EVERTUNE BRIDGE, WHICH KEEPS THE GUITARS IN TUNE UNDER ANY CONDITION OR ABUSE, FULL ACCESS NECK JOINTS, ALDER BODIES AND EBONY FINGERBOARDS. THE PX-SOLAR FR SERIES GUITARS ARE LOADED WITH A FLOYD ROSE 1000 WITH OVERSIZED BRASS BLOCK FOR UNLIMITED TONAL FLEXIBILITY AND INCREASED SUSTAIN AND RESONANCE. COUPLED WITH THEIR STEALTH LOOKS AND DISTINCTIVE CUTAWAY SCOOPS FOR AN EVEN DEEPER ACCESS TO THE HIGHER FRETS, THE PX-SOLAR ET & FR GUITARS ARE VERY SOLID, PRECISE AND PROFESSIONAL INSTRUMENTS THAT WILL SATISFY ANY METAL PLAYER.

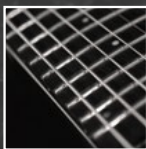


PX-SOLAR16FRC

**BUZZ FEITEN
TUNING
SYSTEM**



**SUPER
JUMBO
FRETS**



**DUNCAN
SOLAR
PICKUPS**



**3 OR 5-WAY
SWITCH**



"The Solar line of guitars have everything I want out of a guitar, the tone, the feel, the looks. Everything just falls into place when I have one in my lap. Washburn gave me free hands to design whatever I wanted, no questions asked, and the outcome is a dream come true."

- Ola Englund



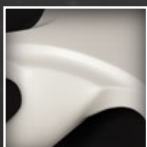
PX-SOLAR SERIES

OLA ENGLUND SIGNATURE



ALSO AVAILABLE AS LEFT HANDED
VERSION & IN CARBON BLACK MATTE

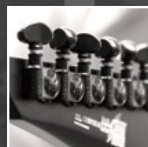
FULL ACCESS
SET NECK
JOINT



HIPSHOT
STYLE
BRIDGE



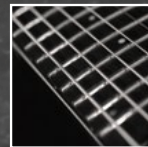
GROVER 18:1
LOCKING
TUNERS



BUZZ FEITEN
TUNING SYSTEM



SUPER
JUMBO FRETS



THE PX-SOLAR SERIES IS THE SIGNATURE LINE OF SWEDISH GUITARIST AND PRODUCER OLA ENGLUND (THE HAUNTED, FEARED, FORMER SIX FEET UNDER...). THE PX-SOLAR GUITARS FEATURE HIPSHOT BRIDGE, FOR MAXIMUM TONAL INTEGRITY AND SIMPLICITY, FULL ACCESS NECK JOINTS, ALDER OR SWAMP ASH BODIES AND EBONY FINGERBOARDS. COUPLED WITH THEIR STEALTH LOOKS AND DISTINCTIVE CUTAWAY SCOOPS FOR AN EVEN DEEPER ACCESS TO THE HIGHER FRETS, THE PX-SOLAR GUITARS ARE VERY SOLID, PRECISE AND PROFESSIONAL INSTRUMENTS THAT WILL SATISFY ANY METAL PLAYER.



PX-SOLAR170C



PX-SOLAR180C

ALSO AVAILABLE AS
LEFT HANDED VERSION

**DUNCAN
USA
PICKUPS**



**3 OR 5-WAY
SWITCH**



PX-SOLAR V / ET / FR SERIES

OLA ENGLUND SIGNATURE



PX-SOLAR V16ETCK



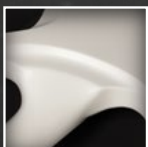
PX-SOLAR V160WHMK



PX-SOLAR V170CK

ALSO AVAILABLE IN
CARBON BLACK MATTE

**FULL ACCESS
SET NECK
JOINT**



**SPRING
SILENCERS**
(ONLY FOR FR SERIES)



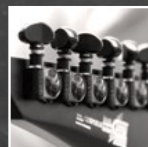
**STRING THRU
TUNE-O-MATIC
BRIDGE**



**EVERTUNE
BRIDGE**
(ONLY FOR ET SERIES)



**GROVER 18:1
LOCKING
TUNERS**



**BUZZ FEITEN
TUNING
SYSTEM**



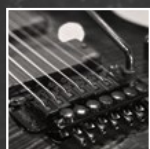
**DUNCAN
SOLAR
PICKUPS**



THE PX-SOLAR V / ET / FR IS THE LATEST ADDITION TO OLA ENGLUND'S (THE HAUNTED, FEARED, FORMERLY IN SIX FEET UNDER) SOLAR LINE OF GUITARS. THE PX-SOLAR V GUITARS FEATURE STRING THRU TUNE-O-MATIC, EVERTUNE OR FLOYD ROSE BRIDGES, FULL ACCESS NECK JOINTS, MAHOGANY BODIES AND EBONY FINGERBOARDS. COUPLED WITH A CLEAN, SIMPLE DESIGN AND STEALTH MENACING LOOKS, THE PX-SOLAR V GUITARS ARE VERY SOLID, PRECISE AND PROFESSIONAL INSTRUMENTS THAT WILL SATISFY ANY METAL PLAYER.



**FLOYD
ROSE SPECIAL**
(ONLY FOR FR SERIES)



**SUPER
JUMBO
FRETS**



**3 WAY SWITCH
WITH PUSH-
PULL COIL**



SOLAR SERIES

PX-SOLAR6

PX-SOLAR6ET

PX-SOLAR16 / 16FR

HEADSTOCK	HARDWARE	PX-SOLAR6C: Black PX-SOLAR6WHM: Chrome	PX-SOLAR6ETC: Black PX-SOLAR6ETPWHM: Chrome	Black
	HEADSTOCK	Reverse PX (Ola Englund Signature), 6 in line	Reverse PX (Ola Englund Signature), 6 in line	Reverse PX (Ola Englund Signature), 6 in line
	MACHINE HEAD	Grover 18:1 Locking	Grover 18:1 Locking	PX-SOLAR16FRC: Grover 18:1 PX-SOLAR16TBLM: Grover 18:1 Locking
NECK	STRINGS	XL-120 D'Addario	XL-120 D'Addario	D'Addario XL-120
	SCALE/FRET	25.5" / 24F, w/ Buzz Feiten Tuning System	25.5" / 24F, w/ Buzz Feiten Tuning System	25.5", 24F w/ Buzz Feiten Tuning System
	NECK MATERIAL	Maple	Maple	Maple
	NUT	Graphite	Graphite	Graphite
	F/B MATERIAL	Ebony w/ Ola Englund inlay on 12th fret	Ebony w/ Ola Englund inlay on 12th fret	Ebony w/ Ola Englund inlay on 12th fret
	BINDING	None	None	None
	FRET WIRE	Super Jumbo Frets	Super Jumbo Frets	Super Jumbo Frets
BODY	BODY SHAPE	Parallaxe (Ola Englund Signature) scooped cutaways	Parallaxe (Ola Englund Signature) scooped cutaways	Parallaxe (Ola Englund Signature) scooped cutaways
	BODY MATERIAL	Alder	Alder	PX-SOLAR16FRC: Alder PX-SOLAR16TBLM: Swamp Ash
	BINDING	None	None	None
	JOINT PLATE	Full Access Neck Joint	Full Access Neck Joint	Full Access Neck Joint
	TAIL & TAIL PIECE	Hipshot	EverTune F-type bridge	PX-SOLAR16FRC: Floyd Rose 1000 PX-SOLAR16TBLM: Hipshot
	PICKUPS	SD SH1N / TB14B	SD SH1N / TB14B	Duncan Solar HB114N / HB114B
	CONTROLS	1V, 1T	1V, 1T	1V, 1T
	SWITCH	5-way blade super switch with Black knobs, Chrome knobs on WHM	5-way blade super switch with Black knobs, Chrome knobs on PWHM	5-way blade super switch with Black knobs
	FINISH	PX-SOLAR6C: Carbon Black Matte PX-SOLAR6WHM: White Matte	PX-SOLAR6ETC: Carbon Black Matte PX-SOLAR6ETPWHM: Pearl White Matte	PX-SOLAR16FRC: Carbon Black Matte PX-SOLAR16TBLM: Trans Blue Matte

All specifications subject
to change without notice



PX-SOLAR16 / 17 ETC**PX-SOLAR160 / 160LH****PX-SOLAR170 / 170LH / 180****PX-SOLARV160 / ET / FR / 170**

Black	PX-SOLAR160WHM: Chrome PX-SOLAR160C: Black	Black	Black
Reverse PX (Ola Englund Signature), PX-SOLAR16ETC: 6 in line PX-SOLAR17ETC: 7 in line	Reverse PX (Ola Englund Signature), 6 in line	Reverse PX (Ola Englund Signature), PX-SOLAR170ETC: 7 in line PX-SOLAR180C: 8 in line	Reverse PX (Ola Englund Signature), PX-SOLARV160 / ET / FR: 6 in line PX-SOLARV170C: 7 in line
Grover 18:1	Grover 18:1	Grover 18:1	Grover 18:1
PX-SOLAR16ETC: XL-120 D'Addario PX-SOLAR17ETC: XL-120-7 D'Addario	XL-120 D'Addario	PX-SOLAR170ETC: D'Addario XL-120-7 PX-SOLAR180C: D'Addario XL-120-8	D'Addario XL-120
25.5"/ 24F, w/ Buzz Feiten Tuning System	25.5"/ 24F, w/ Buzz Feiten Tuning System	PX-SOLAR170ETC: 25.5", 24F w/BFTS PX-SOLAR180C: 27", 24F w/ BFTS	25.5"/ 24F, w/ Buzz Feiten Tuning System
Maple	Maple	Maple	Maple
Graphite	Graphite	Graphite	Graphite
Ebony w/ Ola Englund inlay on 12th fret	Ebony w/ Ola Englund inlay on 12th fret	Ebony w/ Ola Englund inlay on 12th fret	Ebony w/ Ola Englund inlay on 12th fret
None	None	None	None
Super Jumbo Frets	Super Jumbo Frets	Super Jumbo Frets	Super Jumbo Frets
Parallaxe (Ola Englund Signature) scooped cutaways	Parallaxe (Ola Englund Signature) scooped cutaways	Parallaxe (Ola Englund Signature) scooped cutaways	Parallaxe (Ola Englund Signature) V
Alder	Alder	Alder	Mahogany
None	None	None	None
Full Access Neck Joint	Full Access Neck Joint	Full Access Neck Joint	Full Access Neck Joint
EverTune F-type bridge	Fixed bridge	Fixed bridge	PX-SOLARV160C / WHM / 170C: Tune-o-matic with string thru PX-SOLARV16ETC: Evertune PX-SOLARV160FRWHM: Floyd Rose Special
Duncan Solar HB114N / HB114B	Duncan Solar HB114N / HB114B	Duncan Solar HB114N / HB114B	Duncan Solar PX-SOLARV160 / ET / FR: HB114N / HB114B PX-SOLARV170C: HB114-7N / HB114-7B
1V, 1T	1V, 1T	1V, 1T	1V, 1T
5-way blade super switch with Black knobs	5-way blade super switch PX-SOLAR160C: Black knobs PX-SOLAR160WHM: Chrome knobs	5-way blade super switch with Black knobs	3 way switch w/ coil cut in tone control PX-SOLARV160C / 16ETC / 170C: Black knobs PX-SOLARV160WHM / FRWHM: Chrome knobs
Carbon Black Matte	PX-SOLAR160C: Carbon Black Matte PX-SOLAR160WHM / LH: White Matte	Carbon Black Matte PX-SOLAR170C also available in Left Handed model	PX-SOLARV160WHM / FRWHM: White Matte PX-SOLARV160C / 16ETC / 170C: Carbon Black



PXZ-PRIESTESS SERIES

MARZI MONTAZERI SIGNATURE



FULL ACCESS
SET NECK
JOINT



FLOYD ROSE
(FRT200
OR 1000)



TUNE-O-MATIC
FIXED BRIDGE
(PXZ200B)



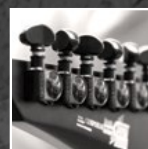
SPRING
SILENCERS



OVERSIZED
BRASS BLOCK



GROVER 18:1
TUNERS



USA /
DUNCAN
DESIGNED
PICKUPS



THE PXZ-PRIESTESS SERIES IS THE SIGNATURE LINE OF HOUSTON, TEXAS GUITARIST AND PRODUCER MARZI MONTAZERI (AKA "THE HIGH PRIEST OF DISTORTION", PLAYING WITH FORMER PANTERA SINGER "PHILIP H ANSELMO & THE ILLEGALS" AND "HEAVY AS TEXAS"). THE PRIESTESS SERIES COMBINES MODERN AND CLASSIC FEATURES PROVIDING UNMATCHED TONE AND SUSTAIN ALLOWING TO MAKE THIS AXE SQUEAL WITH DELIGHT OR DIVE BOMB TO THE DEPTHS OF YOUR SOUL. THE UNIQUE COMBINATION OF CLASSIC ROCK STYLE WITH MODERN SPEED AND SUPERIOR PLAYABILITY MAKES "THE PRIESTESS SERIES" GUITARS A REAL PROFESSIONAL INSTRUMENT THAT WILL SATISFY ANY ROCK TO METAL PLAYER.



**BUZZ FEITEN
TUNING
SYSTEM**



**SUPER
JUMBO
FRETS**



**3-WAY SWITCH
WITH PUSH
PULL COIL**



Photo by Natalia Britt


"I always stand behind what I believe in. "The Priestess" is a great example for it. A lover and a fighter, "The Priestess" allows me to fully express myself with its unique sound, play-ability and an overall beautiful new haunting body style and design that is timeless. It's everything I've always wanted in a Guitar and more."

- Marzi Montazeri



PXZ-PRIESTESS SERIES

MARZI MONTAZERI SIGNATURE

PXZ-MM2FRWH 

PXZ-MM20FRWH

PXZ-200B

HEADSTOCK	HARDWARE	Black	Black	Chrome
	HEADSTOCK	Marzi Signature	Marzi Signature	PXZ Style
	BINDING	None	None	None
	MACHINE HEAD	Grover 18:1	Grover 18:1	Grover 18:1
NECK	STRINGS	Dunlop Custom Heavy Core 11-54	XL-120 D'Addario	XL-120 D'Addario
	SCALE/FRET	Standard 25 1/2" 24F, with Buzz Feiten Tuning System	Standard 25 1/2" 24F, with Buzz Feiten Tuning System	Standard 25 1/2" 24F, with Buzz Feiten Tuning System
	NECK MATERIAL	Mahogany	Mahogany	Mahogany
	NUT	Locking	Locking	Graphite
	F/B MATERIAL	Ebony	Ebony	Ebony
	BINDING	None	None	None
	FRET WIRE	Super Jumbo Frets	Super Jumbo Frets	Super Jumbo Frets
BODY	BODY SHAPE	PXZ	PXZ	PXZ
	BODY MATERIAL	Mahogany	Mahogany	Mahogany
	BINDING	None	None	None
	JOINT PLATE	Full Access Set Neck	Full Access Set Neck	Full Access Set Neck
	TAIL & TAIL PIECE	Original Floyd Rose FRT200 w/ 34mm brass block	Floyd Rose 1000 w/ 34mm brass block	Tune-o-matic
	PICKUPS	SD 59' / JB	SD 59' / JB	Duncan Designed HB101N / HB103B
	CONTROLS	1 Master vol, 1 Neck vol, 1 neck tone	2V, 1T w series / parallel switching	2V, 1T w coil splitting
	SWITCH	3-way Toggle Switch with Speed Knobs	3-way Toggle Switch with Speed Knobs	3-way Toggle Switch with Speed Knobs
	FINISH	White gloss	White gloss	Black gloss

All specifications subject to change without notice

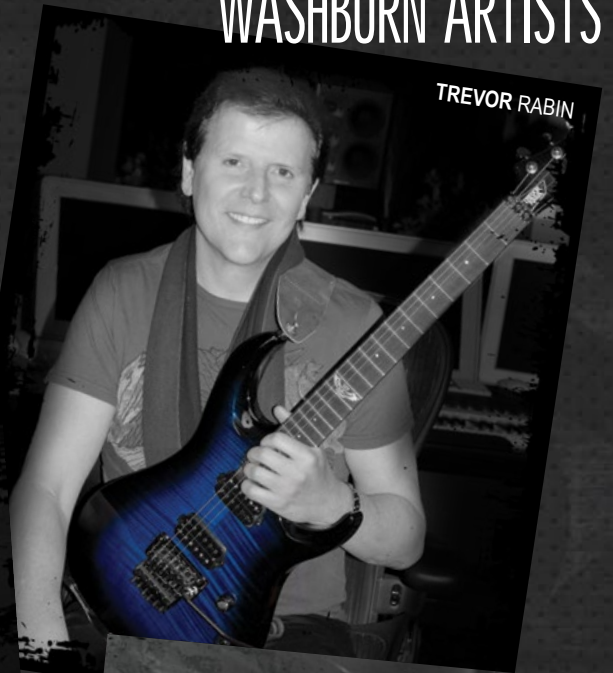


WASHBURN ARTISTS

OLA ENGLUND



TREVOR RABIN



MARZI MONTAZERI



JENNIFER BATTEN



NUNO BETTENCOURT



MICHAEL SWEET



MARC RIZZO



DAVID PALAU - SESSION ACE



GREG ROUNDING & RYAN HOFING - CRIMSON SHADOWS



DANI EVANS



SKAWA



EUGENE BERGER



RITCHIE WILLHELM - 9MM



ROCK ROTTEN - 9MM



VINCE NEIL



HANS VAN EVEN



AKOS - KILL WITH HATE



JACEK KROLIK - SESSION ACE

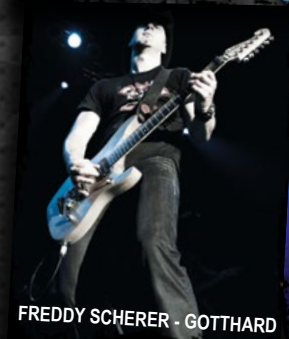
PHOTO BY: JACEK DYLAG



TILL PROMIL - SALTATIO MORTIS



JEAN MÉCHANT - SALTATIO MORTIS



FREDDY SCHERER - GOTTHARD



AUGUSTO LOPES - FANTTÄSMA



NICK BOWCOTT



MUNDO JULLIERAT



PAUL MITYANINE - THE FADING



CARLO HERNÁNDEZ "TAIL" & PEDRO VÁZQUEZ ROBLES - SPLITHEAVEN



FÁBIO DELI - MACHINAGE



GEORGE BOKOS - STONE COLD DEAD



FABIAN SCHWARZ - THE NEW BLACK



CRUOR - ENDSTILLE



JANNIK SCHMIDT - VOGELFREY





MATT ROGERS - DEEZ NUTS



NICOLAS ALBERNY - GOROD



ARKADIUS - SUIDAKRA



OFFICER Z - WILD ZOMBIE BLAST GUIDE



Z BOY - WILD ZOMBIE BLAST GUIDE



CRISTI BĂLĂNEAN - DIRTY SHIRT



DAN "RINI" CRĂCIUN - DIRTY SHIRT



MIHAI TIVADAR - DIRTY SHIRT



CHRISTIAN FITZNER - COR



CLAPPETA PINO - WAS



WIKTOR DARASZKIEWICZ - PROLETARYAT



SAYIT DOLEN



GUY BEN DAVID - HAMMERCULT



BUSI - CRISIX



LASSE LAMBERT - PRODUCER



JASON FRANKHOUSER



DARKEST HORIZON



REQUENA - CRISIX



VLADIMIR KUZMIN



BARUSSO MARCO



JÜRGEN BREFORTH - MAD MAX



MATZE WURM, ALIAS EYE



PARALLAXE

WWW.WASHBURN.COM/PARALLAXE

USM
U.S. MUSIC CORP.
A DIVISION OF JAM INDUSTRIES

Washburn Guitars is a Division of U.S. Music Corp.
1000 Corporate Grove Drive • Buffalo Grove, IL 60089
Tel: (800) 877-6863 | www.washburn.com

COPYRIGHT © JANUARY 2016 WASHBURN GUITARS. UNAUTHORIZED REPRODUCTION OF THIS CATALOG IS A VIOLATION OF APPLICABLE COPYRIGHT LAWS. PRODUCT SPECIFICATIONS ARE SUBJECT TO CHANGE WITHOUT NOTICE.